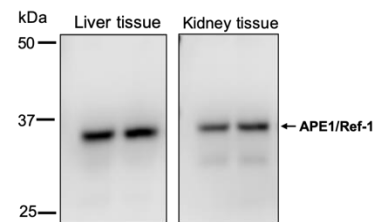


# APE1/Ref-1 Monoclonal Antibody (14E1)

Catalog Number MR-MA14

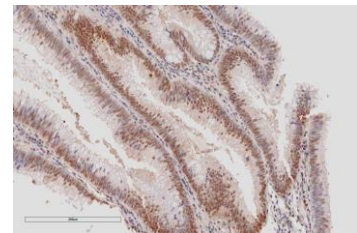
Antibody information	
Protein name	APE1/Ref-1, APEX1, APE1, Ref-1
Clone	14E1
Species reactivity	Human, mouse, Rat
Size	100µg
Concentration	1mg/ml
Host	Mouse
Immunogen	Full-length, Recombinant human APE1/Ref-1 protein
Conjugate	Unconjugated
Form/ storage solution	Liquid, 0.05% sodium azide in PBS
Molecular weight	36.5 kDa
Purification	IgG purified
Storage	Shipped at 4°C. Upon delivery aliquot and store at -20°C Avoid repeated freeze / thaw cycles

Applications	Recommended concentration
Western blot (WB)	1:200 - 1:1000
Immunohistochemistry (IHC)	1:50 – 1:200
ELISA	Assay dependent



### Detection of mouse APE1/Ref-1 by western blotting.

Western blot showing lysates of mouse tissue (Liver and Kidney). The APE1/Ref-1 band with approximately 36.5kDa was detected.



### APE1/Ref-1 in Human colon tissue.

APE1/Ref-1 was detected in a PFA fixed paraffin-embedded section of human colon tissue using an APE1/Ref-1 monoclonal antibody (14E1).

## Background/Target Information

Apurinic apyrimidinic endonuclease 1/Redox factor-1 (APE1/Ref-1) is a multifunctional protein; its N-terminal region is involved in redox activity and regulates multiple transcription factors, and its C-terminus is associated with base excision DNA repair activity. APE1/Ref-1 is mainly localized in the nucleus and shows dynamic shuttling between the nucleus and cytoplasm in response to various stress stimuli. Recently, possible extracellular secretion of APE1/Ref-1 was reported.

## Note

For Research Use Only. Not for use in diagnostic or therapeutic procedures. This product is not a medical device.

MediRedox Inc.

Biomedical convergence Research Center, 266 Munwharo, Jung-gu Daejeon, Republic of Korea.

Tel : 042-280-6767 Fax : 042-280-6730 e-mail : master@mediredox.com